

[Next >>](#)

Home

General

Presentation

Step 1 : Fares

request

Step 2 : Display fares

& availability

Step 3 : Display

flights schedules

Step 4 : Enter

names/apply

payment

Configuration Tool

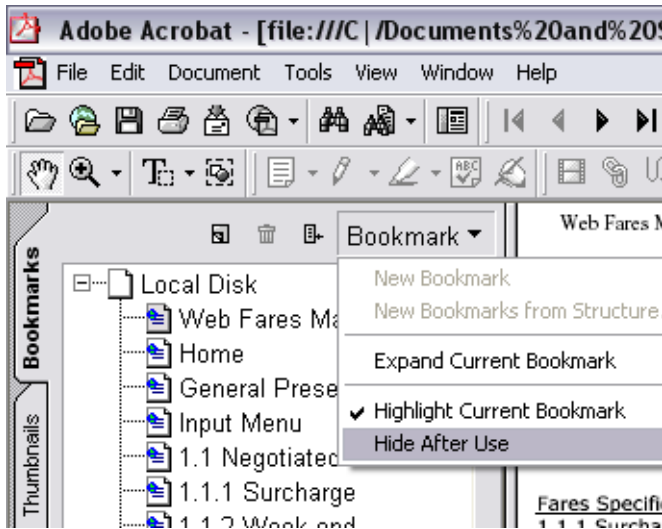
Labels

B2C Documentation

Release 2.3

Revised April, 2006

Open your bookmark pannel to see menu. Make sure that "hide after use" option is OFF.



[Next >>](#)

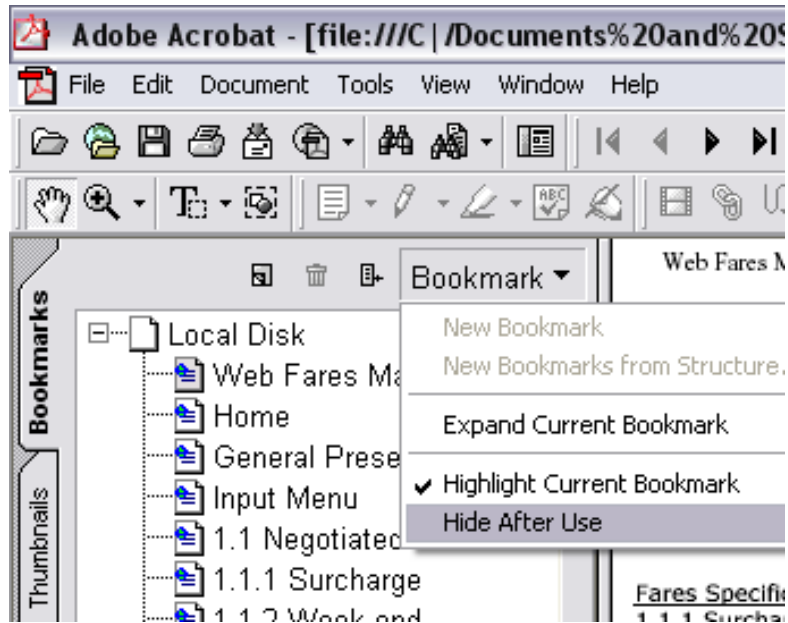
[Next >>](#)

B2C Documentation

Release 2.3

Revised April, 2006

Open your bookmark pannel to see menu. Make sure that "hide after use" option is OFF.

[Next >>](#)

General Presentation

The Business to Consumers (B2C) booking engine allows consumers to make flights reservations for the following:

Negotiated

Negotiated fares contracts : Negotiated fares contracts from airlines that are created in Webfares management system.

Private fares: Negotiated fares contracts created in the GDS by the airline.

Commission grids (with special fare type PF) in Webfares are created to enable the booking engine to pull-up these fares from the GDS and apply the mark-up to get proper selling fare.

Commission Grids

Published Fares in GDS on which overrides are applicable. Commission grids in Webfares are created to enable the booking engine to pull-up these fares from the GDS, apply the proper commission override(s) to get proper cost and apply mark-up in \$ or % to get proper selling fare.

Pure Published

Your booking engine can also offer 'Pure' published fares on which you can apply service fees (pulled up from WEBFARES and displayed only at price confirmation) or mark-up (from B2C configuration file and included in NET fare at fare display).

Pure published are retrieved from the GDS using the following commands:

Galileo: XML select but equivalent would be \$BBQ

Sabre: Trip search (JR command) or WPNI

Worldspan: Power Shopper

Amadeus: XML select but equivalent would be Power Fare

System displays the result of those commands therefore, the best available published fare per airline.

Parameters ruling the booking engine are provided by:

NewB2C Configuration tool.

Webfares Management system (CC fees, PCC info, Service fees, Distribution surcharge, etc...)

PNR file, maintained by Openfares.

Label files that allows you to create your own titles for all fields of the throughout the B2C engine.

B2B owners

For Consolidators that also own a B2B license, it is possible to view through the B2B, the PNR's made through the B2C (using the PNR button or REPORTING module)

To mark-up B2C fares:

You can have additonal mark-up (In \$ or %) in the Configuration file.

This will be added on top of fare information provided from webfares for Nets and Commission grids (for PF or commission override) or for pure published fares provided directly from GDS.

AND/OR

For special mark-ups on some B2C fares (per fare line, groupe of cities or specific contract), you can use the SURCHARGE table in Webfares.

In this surcharge table you can specify the amount (no %) and distribution code.

Make sure you put in the distribution code in the configuration file for the specific pin code.

For example:

YYZ-ATL is \$700 on B2B and you want to sell it at \$750 on B2C

In webfares, for \$700 fare,

you create a surcharge of \$0 with distribution code ALL

you create a surcharge of \$50 with distribution code B2C

These surcharges can be entered at Contract level, group of cities level or fare line level.

Then, you set up the distribution code to B2C for the specific pin code using the configuration file

The fare on the B2C will be \$750!

To create a link to your B2C:

If you want to create a link that brings you to your B2C site, you need to pass on 2 parameters in the HTML document or in the hyperlink:

pincode: profil identification number in configuration file.

lang: language, en for english, fr for french, pr for portuguese and es for spanish.

if language is en (default) no need to pass it on.

you need a configuration file for each of the languages you plan to use.

The <**FORM ACTION**> must be `http://your URL address/cgi-bin/NewB2C/request.cgi?pincode=*****&lang=en`

***** would be your pin code

Html pages

The Consolidator can provide its own HTML pages for the following:

- Request page *
- Please wait image
- Terms and conditions and security code information in payment page *
- Any top or bottom banners throughout the booking engine *

* For initial setup, these files must be sent to Openfares.

As per Top and bottom banners, client could also use top and bottom frames instead, for which they would not need us nor the NewB2C config.

Step 1 : Fares Request

Request page is usually an HTML page provided by the Consolidator.

Along with the request information (such as gateway, destination, dates, etc., the **pincode** and **lang** must be passed on when you post the information. Values for other options (such as `fetch_pub`, `only_cheap`, etc...) will be picked up in the configuration file of the appropriate pin code.

If you hard code the values, they will have priority over the configuration file values.

```
form method="POST" action="show-fares.cgi" name="farerequest" onSubmit="return request_validation();">
<input type=hidden name="pincode" value="000000">
<input type=hidden name="lang" value="en">
```

Openfares can provide its standard page but support and modifications to it are subject to development costs.

Our Booking engine searches for fares for the request dates then + 1 day and +2 days if misconnections.






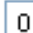

Gateway and destination can be either airport code or city codes or names.

System will use the airport table in webfares and do the following search:

Search for airport code (if 3 letters) in CITY and AIRPORT table in Webfares. If found, stops.

Search for exact airport description in CITY and AIRPORT table in Webfares. If found, stops.

Search for anything starting with the same 3 letters in CITY and AIRPORT table in webfares and provide the list.

From: yyz	To: lon	
From: 	To: yyz	
<input checked="" type="radio"/> Return	<input type="radio"/> One Way	
Departure Date Apr 20 	Return Date Apr 27 	
Any Time 	Any Time 	
Adult 1 	Child 0 	Infant 0 
[Age 12+]	[Age 2-11]	[Age 0-2]
Eco 	<input type="checkbox"/> Student	
Search		

Once you click on search, your Top banner will display along with the please wait image while the request is processed.

*** Your top banner goes here ***

Please wait...

This is the standard image provided by Openfares.

You can make your own image (per language) and specify the full path in the configuration file:

config/[langue]/config.*

langue = en (english), fr (french), pr (portuguese), es (spanish) and jp (japanese)

This file contains:

jscript_file=/java.js

wait_img_name=/images-B2C/wait.gif

Wait image is displayed everywhere there is a waiting period.

[<< Previous](#) - [Next >>](#)

Step 2 : Display fares & availability

If pure published fares are set to be offered, they will immediatly be displayed with the green button to book it.
(Cheapest fare per airline)

Other fares (such as nets, private fares, overrides on published will be displayed in yellow to allow the client to click on FIND in order to look for availability.

From:

To:

From:

To:

Return One Way

Departure Dates

Return Dates






Adult Child

 [age 12+] [age 2-11]

Infant

 [age 0-2]

ITINERARY SUMMARY	Leaving on:	2006/04/20	Departure:	Lester B.Pearson International airport, Totonto,Canada
	Returning on:	2006/04/27	Return:	London, United Kingdom, All airports

Avail	Company	Adult fare	Class
<input type="button" value="Find"/>		359 CAD	Eco / Eco
<input type="button" value="Book it !"/>		850 CAD	Eco / Eco
<input type="button" value="Book it !"/>		1138 CAD	Eco / Eco
<input type="button" value="Book it !"/>		1333 CAD	Eco / Eco
<input type="button" value="Book it !"/>		2836 CAD	Eco / Eco

openfares.com

If fare is available, yellow button FIND will be replaced by a green button BOOK IT!

If fare is not available, yellow button will be replaced by a red button SOLD OUT
 If an upsale is available, a new fare line will be displayed with a green button BOOK IT!

*** Your top banner goes here ***

From:

To:

From:

To:

Return One Way

Departure Dates

Return Dates

Adult Child

 [age 12+] [age 2-11]

Infant

 [age 0-2]

ITINERARY SUMMARY	Leaving on:	2004/05/06	Departure:	Dorval International Airport, Montreal, Canada
	Returning on:	2004/05/13	Return:	Paris, France, All airports

Avail	Compagnie	Tarif adulte	Classe
Sold out	Air France	295 CAD	Eco / Eco
Book it !	Continental Airlines	425 CAD	Eco / Eco
Sold out	Delta Air Lines	425 CAD	Eco / Eco
Book it !	British Airways	950 CAD	Eco / Eco
Book it !	Air France	1469 CAD	Eco / Eco
Book it !	Royal Jordanian	1719 CAD	Eco / Eco
Book it !	AC	1970 CAD	Eco / Eco
Book it !	Swiss International Air Lines	2054 CAD	Eco / Eco
Book it !	AC	2659 CAD	Eco / Eco
Book it !	KLM	2710 CAD	Eco / Eco
Book it !	Lufthansa	4862 CAD	Eco / Eco

*** YOUR BOTTOM HTML BANNER GOES HERE ***

There is an option to display only AVAILABLE fares at fare display.
 We must first determine if your setup is appropriate to handle it.
 You must contact Openfares for this possibility.

You can decide in the configuration tool if you wish to display airline TEXT instead of airline logos.

<< Previous - Next >>

Step 3: Display flights schedules

Flight schedule is displayed providing outbound and inbound flights separately in order to choose the appropriate itinerary.

From:
YUL

To:
PAR

From:
PAR

To:
YUL

Return One Way

Departure Dates
May 6
Any Time

Return Dates
May 13
Any Time

Adult: 1 Child: 0
[age 12+] [age 2-11]

Infant: 0
[age 0-2]

Search

ITINERARY SUMMARY	Leaving on:	2004/05/06	Departure:	Dorval International Airport, Montreal, Canada
	Returning on:	2004/05/13	Return:	Paris, France, All airports

Select	Airline	Flight	Depart From	Depart At	Arrive At	Arrive At
<input checked="" type="radio"/>	Continental Airlines	3295	Montreal, Dorval International Airport, Canada	1815	Newark, Newark International Airport, USA	1955
-	Continental Airlines	54	Newark, Newark International Airport, USA	2210	Paris, Charles de Gaulle, France	1120

Select	Airline	Flight	Depart From	Depart At	Arrive At	Arrive At
<input checked="" type="radio"/>	Continental Airlines	57	Paris, Charles de Gaulle, France	0955	Newark, Newark International Airport, USA	1200
-	Continental Airlines	2490	Newark, Newark International Airport, USA	1455	Montreal, Dorval International Airport, Canada	1614
<input type="radio"/>	Continental Airlines	55	Paris, Charles de Gaulle, France	1400	Newark, Newark International Airport, USA	1630
-	Continental Airlines	3274	Newark, Newark International Airport, USA	2040	Montreal, Dorval International Airport, Canada	2202
<input type="radio"/>	Continental Airlines	57	Paris, Charles de Gaulle, France	0955	Newark, Newark International Airport, USA	1200
-	Continental Airlines	212	Newark, Newark International Airport, USA	1430	Cleveland, Cleveland-Hopkins International Airport, USA	1604
-	Continental Airlines	2948	Cleveland, Cleveland-Hopkins International Airport, USA	1855	Montreal, Dorval International Airport, Canada	2028

Book

For **pure published** fares:

For **Galileo**, flight schedule display is the same as other type of fares.

For **Sabre** and **Worldspan**, the flight schedule is using a different display model: (married flights)

Reserver !

Le tarif adulte est 730

Compagnie	Vol	Aéroport de départ	Heure de départ	Aéroport d'arrivee	Heure d'arrivee
Air France	348	Paris, Charles de Gaulle, France	1855	Montreal, Dorval International Airport, Canada	2030
Air France	349	Montreal, Dorval International Airport, Canada	2250	Paris, Charles de Gaulle, France	1140

Reserver !

Le tarif adulte est 730

Compagnie	Vol	Aéroport de départ	Heure de départ	Aéroport d'arrivee	Heure d'arrivee
Air France	348	Paris, Charles de Gaulle, France	1855	Montreal, Dorval International Airport, Canada	2030
Air France	345	Montreal, Dorval International Airport, Canada	1735	Paris, Charles de Gaulle, France	0625

Reserver !

Le tarif adulte est 730

Compagnie	Vol	Aéroport de départ	Heure de départ	Aéroport d'arrivee	Heure d'arrivee
Air France	348	Paris, Charles de Gaulle, France	1855	Montreal, Dorval International Airport, Canada	2030
Air France	347	Montreal, Dorval International Airport, Canada	2005	Paris, Charles de Gaulle, France	0850

Once Schedule selected, another screen is displayed to confirm the fare and itinerary and taxes:

From:

To:

From:

To:

Return One Way

Departure Dates

Return Dates

Adult Child

 [age 12+] [age 2-11]

Infant

 [age 0-2]

ITINERARY SUMMARY	
Leaving on:	2006/05/20
Returning on:	2006/05/27
Departure:	Lester B. Pearson International airport, Totonto, Canada
Return:	London, United Kingdom, All airports

British Midland	Flight # 4868	
Departure:	Toronto, Lester B. Pearson International Airport, Canada	All prices displayed in CAD
	2006/05/20 0900	
Arrival:	London, Heathrow Airport, United Kingdom	Adult 1 x 778.00
	2006/05/20 2115	Taxes 1 x 219.65
<hr/>		Service fee adult 1 x 5.00
British Midland	Flight # 4863	TOTAL 1002.65
Departure:	London, Heathrow Airport, United Kingdom	<input type="button" value="Continue"/>
	2006/05/27 1105	
Arrival:	Toronto, Lester B. Pearson International Airport, Canada	
	2006/05/27 1405	

openfares.com

If you have specified service fees in WEBFARES, they will be displayed in the PRICE box.

<< [Previous](#) - [Next](#) >>

Step 4: Enter names

When user continues, payment page is displayed.

It is possible to set your B2C to allow booking WITHOUT payment by putting NONE in payment_mode (or any value except CC or blank) in Configuration file.

From: <input type="text" value="YYZ"/> To: <input type="text" value="LON"/> From: <input type="text" value="LON"/> To: <input type="text" value="YYZ"/> <input checked="" type="radio"/> Return <input type="radio"/> One Way Departure Dates <input type="text" value="May"/> <input type="text" value="20"/> <input type="text" value="Any Time"/> Return Dates <input type="text" value="May"/> <input type="text" value="27"/> <input type="text" value="Any Time"/> Adult <input type="text" value="1"/> Child <input type="text" value="0"/> [age 12+] [age 2-11] Infant <input type="text" value="0"/> [age 0-2] <input type="button" value="Search"/>	ITINERARY SUMMARY		Leaving on: 2006/05/20	Departure: Lester B. Pearson International airport, Toronto, Canada
	Returning on: 2006/05/27	Return: London, United Kingdom, All airports		

Passengers Details (Adults)				
# - Title	First Name	Last Name		
1 - Mr	<input type="text"/>	<input type="text"/>		

Address and Payment Information				
Address:	Suite / Apt:	Buzzer:	City:	State / Prov: Zip / Postal Code
<input type="text"/>	<input type="text"/>	<input type="text"/>	<input type="text"/>	<input type="text"/>
Daytime Phone Number	Evening Phone Number	E-mail	Delivery	
<input type="text"/>	<input type="text"/>	<input type="text"/>	<input type="text"/>	
Credit Card	Number	Expiration	Security Code	Holder
<input type="text" value="Visa"/>	<input type="text"/>	<input type="text" value="MM"/> <input type="text" value="YY"/>	<input type="text"/>	<input type="text" value="Adult # 1"/>
Do you want insurance (extra \$26 per pax)? <input type="checkbox"/>				
The Grand Total including delivery fees is <input type="text" value="1002.65"/> I agree with your Terms and Conditions <input type="checkbox"/>				
This booking is subject to certain conditions. Please read the rules and regulations carefully.				

Once all info is filled, and payment is accepted, PNR is created. If payment is refused, PNR is auto-cancelled.

Terms and Conditions as well as **Security code** information can be provided by the consolidator.
Just transfer your files in the HTML directory.

Files must be created with the following names:

term_cond.html
sec_code.html

Usually for ALL B2C pin codes, there is 1 java file called **java.js**
HTML documents are called using java scripts, therefore this file contains the names of the pages.

In order to have different terms & conditions per pin code, you must advise Openfares.

We will then do the following:

Have one java.js file per pin code that would be named the following way: *pincode.js*

So, you could have for example:

000300.js
000301.js
etc..

In 000300.js, terms and conditions could be called term_cond000300.html

In 000301.js, terms and conditions could be called term_cond000301.html

You would then simply create your HTML pages (sec_code.html, term_cond000300.html, term_cond000301.html, etc)
and transfer them in the HTML directory.

[<< Previous](#) - [Next >>](#)

Configuration Tool

You must first login using a specific PINCODE (Profile Identification Number) and Password.

PINCODE:	<input type="text" value="000200"/>
PASSWORD:	<input type="password" value="•••••"/>
<input type="button" value="SUBMIT"/>	

The configuration menu will then be displayed:

Configuration tool

Please select one of the following options, and click on the **Submit** button.

Pincode	000000
Config	<input checked="" type="radio"/> *
Airlines	<input type="radio"/> *
Booking msg	<input type="radio"/>
Mail config	<input type="radio"/>
Top mail message	<input type="radio"/>
Bottom mail message	<input type="radio"/>
Mark-up	<input type="radio"/> *
Delivery methods	<input type="radio"/> *
<input checked="" type="radio"/> en <input type="radio"/> fr	
<input type="button" value="SUBMIT"/>	
* same for all languages	

You can select between the following options:
(if you click on the title, it will bring you directly to its documentation)

- 1) Configuration:** General B2C settings for selected Pin code
- 2) Airlines :** For generic airline names

3) Booking message : Messages for a successful and failed booking attempt

4) Mail configuration: Configuration of e-mails sent to customers

5) Top mail message : Top e-mail message

6) Bottom mail message : Bottom e-mail message

7) Mark-up : Mark-up management

8) Delivery methods : Delivery methods management

And click on submit.

Or click on the button **9) Access to reporting:** Reporting tool on your bookings

1) Configuration: General B2C settings for selected Pin code

Options are presented in alphabetical order:

accept_oneways: 1 = offer the one way option (default), 0 = no one way option in request page..

agency: 'User' of travel agency in Webfares from which the profile will be inserted in all PNR's at time of booking.

agy_log_pwd: Password for 'Log' module. You must contact Openfares.

allow_cx: If = 1, the cancel file button will be displayed. Usually displayed in test environment to allow to cancel PNR.

api_path: Will be provided by Openfares, must not be changed

avail_pub_split: Must be equal to 0 for Sabre or Worldspan and 1 for Galileo
Then the availability of published fares will be displayed the same way as for nets, outbound and inbound flights separately.

call_bff:

0 = will not display the 'pure' published fares

1 = will display the 'pure' published fares

- \$BBQ for Galileo

- Trip Search or WPNI for Sabre

- Power Shopper for Wspan

- Power Fare for Amadeus

ccfees_innet:

1 = Credit card merchant fees (when applicable) are included in net fare, at fare display, therefore, not calculated on taxes or other fees

and not displayed in payment page (default).

0 = Credit card merchant fees (when applicable) will be calculated on total amount (including taxes and other fees) at payment page only. Amount will be displayed on payment page and added to Grand total. The text is 'the following credit card fee applies:'

Note that the text can be customized in your label file: enter_name_and_pmt (lbl_ccfees).

consol_to_display: Must contain your Webfares vender code in order to retrieve fares information from Webfares. Can be use to select multiple venders in case of multi venders license (such as NFO).

If you want to offer ONLY pure published fares, you must leave it blank.

cut_off_time: Cut off time after which the system will consider that office are closed therefore act as it was the next working day. To avoid making last minute bookings when ticketing department is closed. Format is the following: 4 pm would be entered as 1600

days_off: Days when the consolidator is closed. 1-7 equals Monday to Sunday so for example 6,7 means consolidator is closed Saturday and Sunday.

desired_curr: Will convert all fares to the specified currency. Special feature.

display_air_logos: 1 = display airline logos (default), 0 = display airline text in fare display page.

distr_code: To indicate a specific distribution code that is linked to the surcharge table in Webfares (For negotiated fares and commission grids). It can be used to select only specific fares (as a distribution tool) and to have different surcharges (as a mark-up tool). When blank, system will select all valid fares from webfares.

equiv_currency: Not applicable.

fetch_pub:

1 = will display the commission grid fares
(Private fares ATPCO and % override on published fares)
0 = will not display the commission grid fares

gds: This option is no longer valid.

PCC information for all fares except 'pure' published fares are picked up in Webfares management system.

grab_pub_taxes: For Sabre only. If = 1 we do an additional call to SABRE to get tax information separate from fare. For example, if fare is \$600 and taxes \$100, we will display FARE = \$600 TAXES = \$100. If not = 1, system will display FARE = \$700, taxes = \$0.

hide_sec_code: If = 1, security code will be replaced by HIDDEN in PNR.

hour_mode: 24 will use the 24 hour clock format (default). 12 will use the 12 hour clock format (am/pm)

html_title: The title of the html pages

markup_infants: If = 1, dollar markups will apply to infants.

nb_fares_checked: for future release, in development.

nb_fares_returned: for future release, in development.

net_queue : Queue number for all bookings except 'pure' published fares

no_cc_validation : If equal to 1, system will not validate the credit card.

It validates that what you enter as CC# is numeric (the 10 digits, plus the dot and the comma) and that it starts with a 3 if it's an AMEX, a 4 if it's a VISA, or a 5 if it's a MasterCard. That avoids uselessly making bookings for obviously-fake CC numbers such as somebody who would enter something like "11111111111111111111".

offer_students: To display a student fare check box on the request page. If checked, system will pick up negotiated fares identified with fare type SD and commission grid contracts which names are ending with -SD

onlycheap: must be equal to 0 (as Oscar) to show only the cheapest fare per airline

password: Password for the configuration tool

payment_mode: Must be CC or blank to force a credit card payment. Any other value will allow to book without payment.

payment_screen_path: Will be provided by Openfares

pub_gds: To indicate the GDS to use for all 'pure' published fares bookings.

Must be followed by the vender code :

sabreVDR1 (for Sabre, vender code VDR1)

gal-xmlVDR1 (for Galileo, vender code VDR1)

wspanVDR1 (for Worldspan, vender code VDR1)

pub_pcc: PCC (Pseudo city code) for 'pure' published fares bookings

For NFOB2C only (clients that do not have Webfares to determine PCC and queues)

pub_pf: PCC (Pseudo city code) for AC web fares that must retrieve in clients own PCC

For NFOB2C only (clients that do not have Webfares to determine PCC and queues)

pub_queue: Queue number for 'pure' published fares bookings

For NFOB2C only (clients that do not have Webfares to determine PCC and queues)

restrict_countries_to: List of coutry codes to restrict the gateways. For example CA,US

If a request is done for a country other than the ones it is restricted to (ex. Paris), the user will get the following message:

We are sorry, this site does not sell departures for cities located in country FR (country code)

return_home_button: If equal to 1, you will have a button at booking confirmation that will

bring user back to home page at booking confirmation. The button name is determined in the book label file.

show_ttc : If equal to 1, fares will be displayed including the estimated taxes.

sign : Signature that will be inserted in the PNR.

style:

RB2B = will display the fares without searching for availability (yellow buttons)

auto-avail = will display only the available fares (green buttons)

stylesheet_name : File name of the style sheet

take_auth:

1 if you want the system to take the credit card authorization and validate the CC

0 if you do not want the system to take the credit card authorization and therefore, not validate the credit card.

use_type_for_class : If equal to 1, system will look for YJ or YF fare types in webfares (and not base itself on classes) in order to identify first and business negotiated fares.

use_wpni: For Sabre clients, will indicate to use WPNI instead of trip search to retrieve the pure published fares.

user_api: Will be provided by Openfares, must not be changed

vendercode: Your Webfares vender code

vendercode_cities: Vender code to use to reach the airport and city tables in webfares (for multi venders platform only)

New Field: Will be used by Openfares to create new fields in configuration table.

New Field: Will be used by Openfares to create new fields in configuration table.

4) Mail configuration: Configuration of e-mails sent to customers

Once a booking is completed, the system generates 2 emails.

1 email e-mail describing the itinerary is sent to the traveller.

1 email with PNR content is sent to the consolidator

If payment fails, the consolidator receives a ' Rejected Payment ' email.

mail_from: From address that appears on the header of the mail that is sent to the customer

mail_subject: Subject that appears on the header of the mail that is sent to the customer

mail_reply: Reply address that appears on the header of the mail that is sent to the customer

mail_copy: Address where we send a copy of the PNR. Typically, the travel agency. There can be more than one address separated by semi-colon(;

You can personalize (in proper language) the email that is set to client by putting your own titles for the following fields:

mail_lbl_leaving

Mail_lbl_arrivein

mail_lbl_the

mail_lbl_at

mail_lbl_on

mail_lbl_flight

extra_remark_email: When you have the option to ask for pick up agency (or any other question) in payment page, this is the text to insert in the email allong with the retrieved answer.

5) Top mail message : Top e-mail message

Top mail message is free text for the top of the mail that is sent to the customer.

In the middle part, we show the itinerary followed by free text contained in the bottom mail message.

```
*** email congratulation message goes here ***
```

6) Bottom mail message : Bottom e-mail message

Bottom mail message is free text for the bottom of the mail that is sent to the customer.

In the middle part, we show the itinerary preceded by free text contained in the top mail message.

A free line is added every time a new line is inserted.

8) Delivery methods : Delivery methods management

The delivery options syntax is:

You must enter the delivery methods the following way:

Method;fee;Text you want to show. You can not use ; in the text

Eg: Overnight;18.00;Overnight costs 18 bucks

[Method as shown in the PNR]; [fee]; [Text shown on the web]

There must not be any ; (semi colons) inside your text

A free line is added every time a new line is inserted.

Delivery methods will be offered on your booking engine in the same order as displayed here.

9) Access to Reporting

This is a link to the reporting module. Not available on NFO and on ASP platform.

This module will allow you to report on bookings done through the B2C for the specific pin code. (see B2B online documentation for more information).

[<< Previous](#) - [Next >>](#)

Labels definition

You can create your own labels that will appear throughout every step of the booking engine.

Label files are located in the following directory:

cgi-bin/NewB2C/config/langage (**en** for english or **fr** for french, or create any language you want!)

Labels for each page of the booking engine are in separate files for:

request
show-fares
fares_layout
display-avail
display-avail-pub (for Sabre and Worldspan only)
show-prices
enter-names-and-pmt
book
cancel
left-request.html (for this page, label changes must be done directly in the html page)

- Default file for Labels:
If you have more than 1 B2C pincode and do not wish to have Label file per pincode, you simply need to put all your labels in filename.999999

Example: you create a label file show-fares.999999 and your B2C pincode is 123456

- If you have a label file show-fares.123456, system will use it.
- If there are no show-fares.123456, system will use the default show-fares.999999

Labels inside those files are numbered in the following way: lbl1, lbl2, lbl3, etc... for each pages.

request

lbl1->From: **lbl2->To:**
lbl3->From: **lbl4->To:**
 lbl5->Return **lbl6->One Way**

lbl7->Departure Date **lbl8->Return Date**
 May 24 Jun 1
lbl10->Any Time **lbl10->Any Time**
lbl11->Adult 1 **lbl12->Child** 0 **lbl13->Infant** 0
lbl14->[Age 12+] **lbl15->[Age 2-11]** **lbl16->[Age 0-2]**
lbl18->Eco

lbl9 -> for calendar months (Jan, Feb, etc...)

lbl19 -> Bus

lbl20 -> 1st

show-fares

lbl9->One of the city names you entered returned more than one match, please confirm your choice.

lbl10->Depart From:
lbl11->Arrive at:
lbl12->Depart From:
lbl13->Arrive at:

etc...

[<< Previous](#)